

PLANNING THE ELECTRICAL INSTALLATION FOR YOUR NEW HOME



**A LIST OF BEST
PRACTICES FOR YOUR
ELECTRICAL WALK-THROUGH.**



WE ARE THE #1 COMFORT SPECIALISTS IN STEVENS COUNTY AND NORTH SPOKANE

At Northside, we're passionate about helping you live comfortably in your home. That's why we go above and beyond to provide our clients with the best customer service, the latest technologies, and the highest efficiencies.

We believe in staying ahead of the game and offer the best warranties available in the industry.

When you choose Northside, you can rest assured that your comfort and satisfaction is our top priority. We offer a Lifetime Limited Craftsmanship Warranty and stand behind the quality of all our work.

We are always here to help, whether it's a routine checkup or an emergency repair. Trust us to help you keep your home comfortable and safe!



WWW.NORTHSIDEHC.COM



PLANNING THE ELECTRICAL INSTALLATION FOR YOUR NEW HOME: A LIST OF BEST PRACTICES FOR YOUR ELECTRICAL WALK-THROUGH.

Building a new home is an exciting endeavor, and as you embark on this journey, it's essential to pay careful attention to the electrical and lighting aspects of your project. A well-thought-out electrical plan will ensure that your new home is safe, functional, and meets your specific needs and preferences. To help you navigate the electrical installation process, we have compiled a list of best practices that covers various areas of your home to help you prepare for the walk-through with your electrician or builder.

KITCHEN ELECTRICAL CHECKLIST:

The kitchen is often the heart of the home, and its electrical layout should support your culinary activities. Consider the following:

- **Appliance placement:** Plan the location of your kitchen cabinets and appliances, making sure to note any appliances that require dedicated outlets.
- **Hidden cabinet outlets:** Opt for Plugmold hard wired outlet strips that can be discreetly installed under upper cabinets, allowing for a clean backsplash.
- **Under cabinet lighting:** Enhance visibility and convenience in the kitchen by adding extra lighting fixtures beneath your cabinets.
- **Kitchen island outlets:** Consider installing hidden outlets under the island overhang or explore options for popup electrical outlets for a sleek and functional island.
- **Pantry outlets:** Account for the increasing number of cordless devices by adding one or two outlets in your pantry for convenient charging.





BATHROOM ELECTRICAL CHECKLIST:

The bathroom is a space where proper lighting and electrical functionality are essential. Take note of these considerations:

- **Lighting over vanities:** Install vanity light fixtures above the mirrors or opt for wall sconces to avoid unflattering shadows on your face. Consider putting lights above your shower and tubs so they are well lit.
- **Drawer outlet:** Include an outlet in the top bathroom drawer for electric shavers, hair dryers, and other gadgets.
- **Wall shelf over outlet:** To keep your bathroom countertop clutter-free, consider adding a small shelf over the outlet for an electric toothbrush or other devices.
- **USB ports:** If you frequently charge your phone in the bathroom, consider using a combination outlet with built-in USB ports for added convenience.
- **Jack and Jill bathrooms:** Ensure there are light switches at each door of the bathroom, especially in shared or interconnected bathrooms.
- **Heated towel racks:** Upgrade your bathroom experience with heated towel racks, offering both warmth and luxury.
- **Radiant floors:** Consider the installation of radiant heated floors to enhance comfort, especially during colder months.

OTHER LIVING SPACES ELECTRICAL CHECKLIST:

Living rooms, dining rooms, and home offices require specific electrical considerations. Review the following checklist items:

- **Home offices:** Designate a space in your home for a home office and ensure sufficient outlets to accommodate various electronic devices.
- **Outlets for your entertainment center:** Account for the power needs of your television, cable boxes and gaming consoles by planning adequate outlets for your entertainment center.
- **Dining room chandelier:** Determine the ideal placement for the electrical box to hang your dining room chandelier, considering the layout and focal point of the room.
- **Laundry room shelves and hooks:** Utilize your electrical checklist to decide where to position outlets in your laundry room for appliances, such as washers, dryers, and ironing stations.





BEDROOM & CLOSET ELECTRICAL CHECKLIST:

Bedrooms and closets require careful consideration when planning electrical installations. Keep the following points in mind:

- **Ceiling lights:** Decide whether you want ceiling lights in all bedrooms, as they are not standard in most homes.
- **Ceiling fans:** If you prefer having ceiling fans in your bedrooms, ensure proper support and wiring to accommodate their weight and vibration.
- **Bedside switch:** Consider installing a bedside light switch for convenient control of bedroom lighting.
- **More outlets (regular and USB):** Evaluate your power needs and consider installing multiple outlets near beds, including options with built-in USB ports.
- **Sconces:** Free up space on your nightstands by incorporating bedside lighting with sconces.
- **Outlet locations:** Aim for easily accessible outlets in bedrooms, avoiding the need to move furniture to plug in fixtures.
- **Number of outlets:** Plan for additional outlets in bedrooms to accommodate future needs, such as converting a room into a home office or craft space.
- **Closet outlets and lights:** If you use your closet for ironing or steaming clothes, consider adding an outlet inside for convenience. Also, consider putting a light in your storage closets, so you can see better.

HALLWAYS & UTILITY ROOMS ELECTRICAL CHECKLIST:

Ensure functionality and safety in your hallways and utility rooms with these considerations:

- **Hallway light switches:** Install light switches at both ends of hallways for easy access and convenience.
- **Entry door light switches:** Place switches near exterior doors to control both interior and exterior lighting when entering or exiting.
- **Extra laundry room outlets:** Add at least two outlets in the laundry room to accommodate different appliance configurations and provide flexibility for future needs.
- **Home automation panel:** Designate a central location for organizing and controlling your home automation system, considering the integration of electronics and technology.





EXTERIOR DOORS & OUTDOOR ELECTRICAL CHECKLIST:

Enhance the functionality and curb appeal of your home's exterior with proper outdoor electrical planning:

- **Lights for exterior stairs:** Install light switches inside your home to control outdoor stair lighting, ensuring safety during nighttime use.
- **Light switches at exterior doors:** Place switches near exterior doors to control both indoor and outdoor lighting, including doors leading to the garage.
- **Front door lights:** Choose suitable lighting options to highlight your front door, such as ceiling lights or hanging fixtures, while ensuring an appropriate balance of illumination.
- **Patio lighting:** Consider adding ceiling lights or a fan to a covered patio, along with wall sconces, based on the size and layout of your outdoor living space.
- **Outdoor kitchen and other features:** If you plan to incorporate an outdoor kitchen, hot tub, or water feature, ensure the necessary electrical wiring is in place during construction.
- **Flood lights:** Enhance safety and usability of your backyard with strategically placed flood lights, illuminating key areas and deterring trespassers.
- **Garage lighting for safety:** Install motion sensor-based lights above your garage doors to provide visibility and security.
- **Garage coach lights for curb appeal:** Consider adding coach lights on the exterior of your garage to enhance the overall aesthetic appeal of your home.
- **Walkway lighting:** Create a welcoming and safe pathway to your home by installing lighting along walkways.
- **Landscape lighting:** Highlight key features of your landscaping, such as trees and shrubs, with landscape lighting, adding visual interest and ambiance.
- **Outlets for landscaping tools:** Ensure there are sufficient outlets at ground level for plugging in tools like lawn edgers, shears, and other gardening equipment.
- **Outdoor holiday lighting:** Plan for easily accessible outlets and switches to simplify the installation and enjoyment of holiday lights.



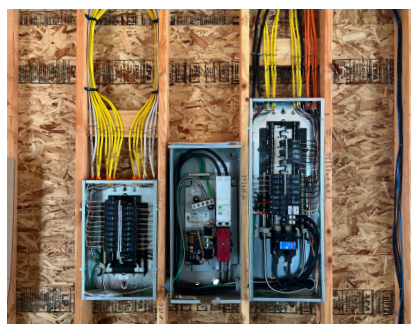


PREPARING FOR FUTURE UPGRADES:

As technology evolves and your needs change, it's essential to prepare for future electrical projects. Consider the following suggestions:

- **Photograph open walls:** Before the drywall is installed, take photos of the wiring and electrical boxes in each room, labeling them to facilitate future reference.
- **Conduits for future wiring:** Install conduits along driveways, patios, and between the basement and attic to accommodate future outdoor and indoor wiring needs.

By following this comprehensive electrical checklist and working closely with your electrician, you can ensure that your new home is equipped with a safe and efficient electrical system that meets your specific requirements. Proper planning and consideration of these details will contribute to the comfort, functionality, and overall enjoyment of your new home for years to come.





**WE ARE THE #1 COMFORT SPECIALISTS
IN STEVENS COUNTY AND NORTH SPOKANE**

WWW.NORTHSIDEHC.COM